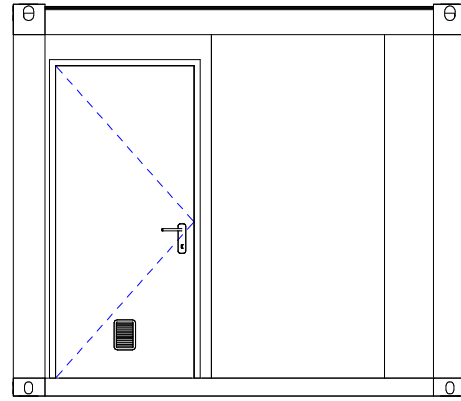
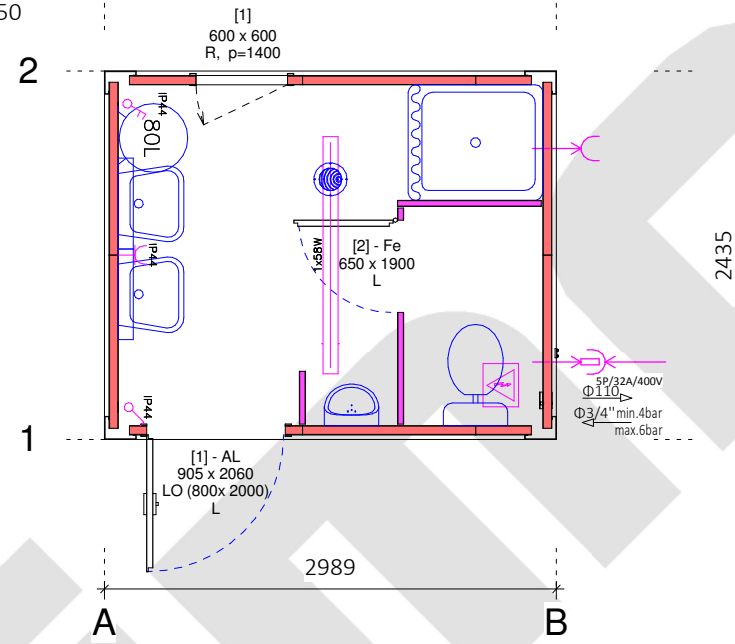


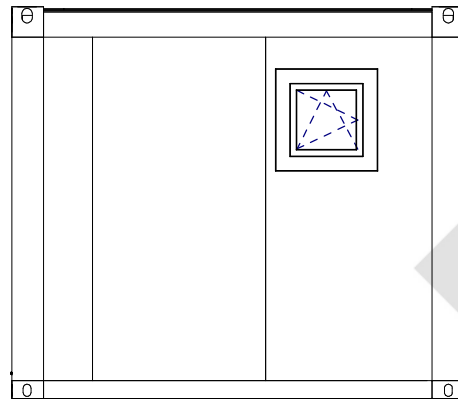
View Front side
1 : 50



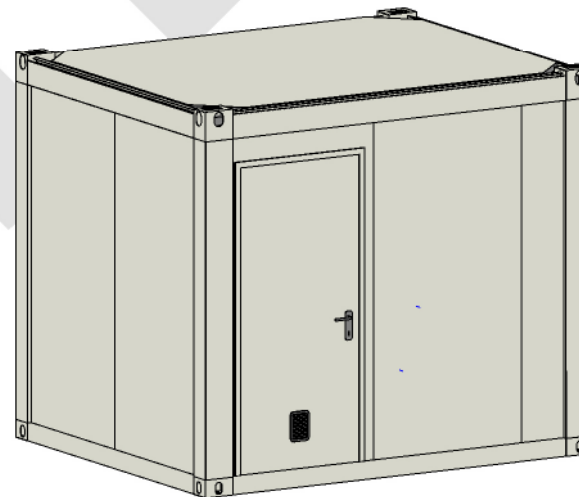
Plan view
1 : 50



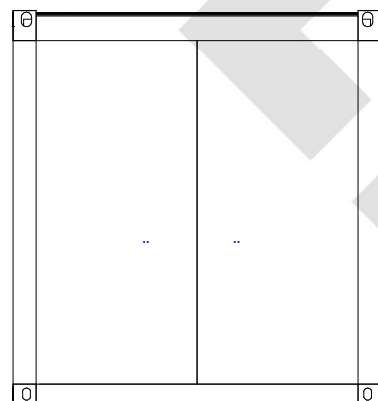
View Back side
1 : 50



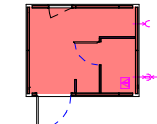
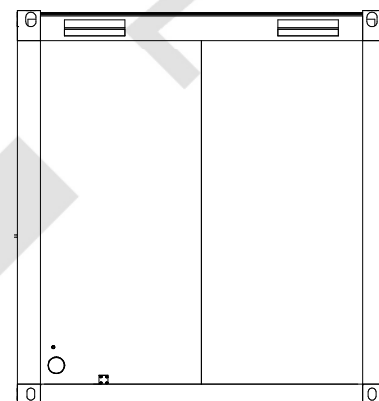
3D



View Left side
1 : 50

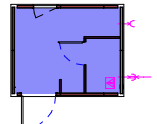


View Right side
1 : 50



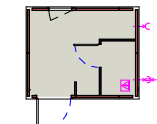
Floor plate

Woodcement plate



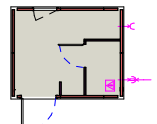
Floor covering

PVC Gray



Ceiling covering

FT 9002



Inner wall color

RAL 9002

Symbol	Light type	Pcs.
1x58W	Fluo light 1x58W	1

Symbol	Electrical equipment	Pcs.
IP44	Phase switch IP44	1
IP44	Switch single IP44	1
IP44	Socket single IP44	1



Trimo MSS, Modular Space Solutions, d.d.
Prijateljjeva cesta 12, 8210 Trebnje, Slovenija

Purchaser:	Drwg. Nr.: STD-009 - 03
Drwg. name: Plan with views	Version.: 01
Object: TIP I2	Scale: As indicated
Ref. number: STD 009	Designed: Trimo MSS
Date: 1.10.2015	Approved:

Panel	Type	Ins. [mm]	Labels	Trimo
FTV-60	60	60	Water inst.	PVC
Fe-40	40	40	Electricity	230/400V, 50 Hz
			Forklift	/
			Ceiling insulation	100mm
			Floor insulation	100mm
			Frame galvaniz.	/
			Panel color	RAL 9002
			Frame color	RAL 9002
			Inner height	2,326m
			Accomplishment	Assembled

The contents of this drawing is PROPRIETARY and CONFIDENTIAL, wholly owned by Trimo MSS d.d., intended for authorized use only, and may be protected by material authors rights, copyrights, and/or other IP rights, including and not limited by trademarks, patents, industrial designs, whether registered, or not. Trimo MSS d.d. prohibits authorized use of this document. Violators may be subject to criminal and/or civil prosecution.