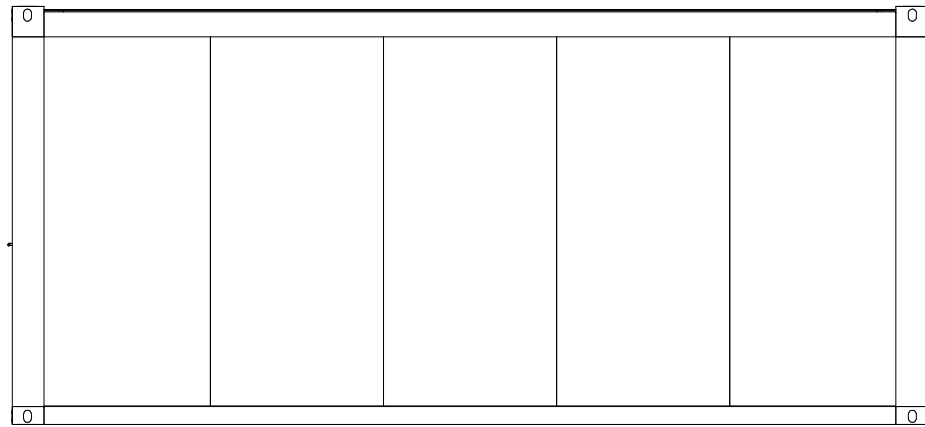
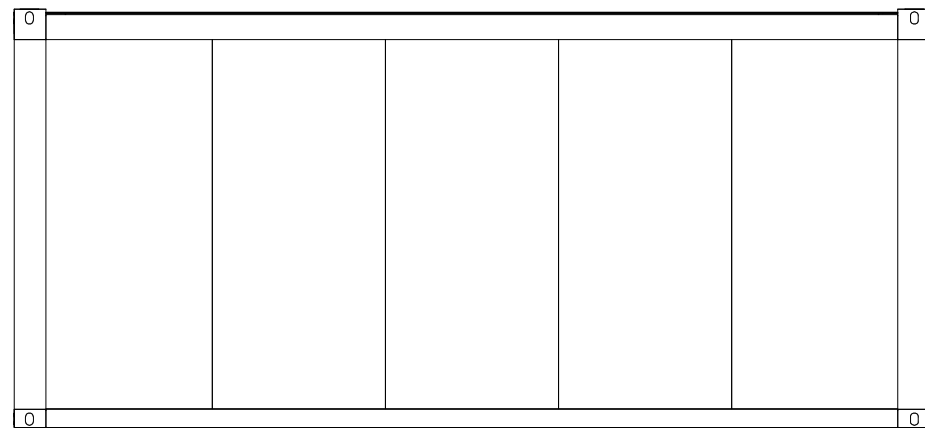


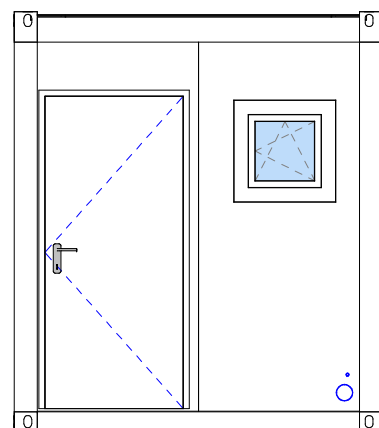
View Front side
1 : 50



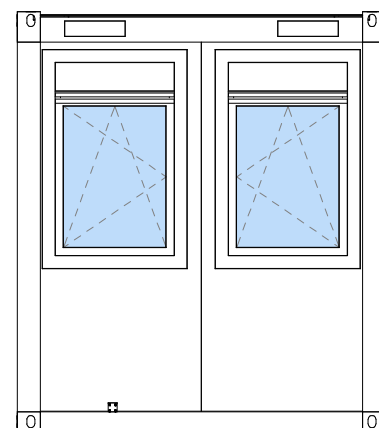
View Back side
1 : 50



View Left side
1 : 50

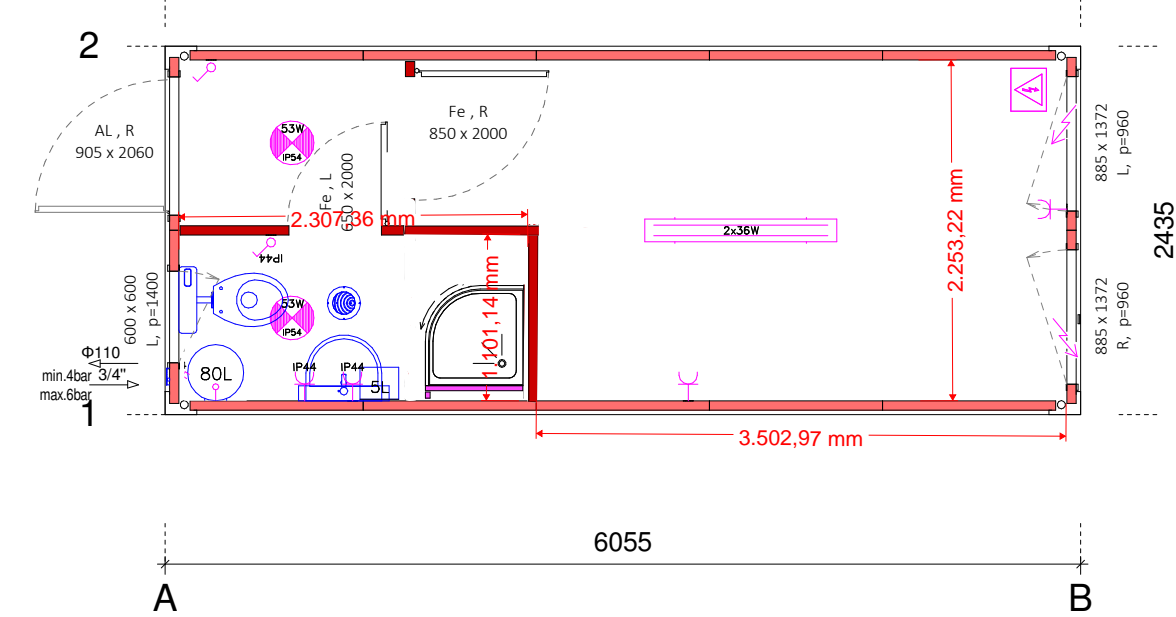


View Right side
1 : 50

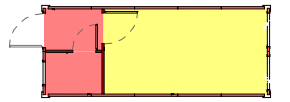
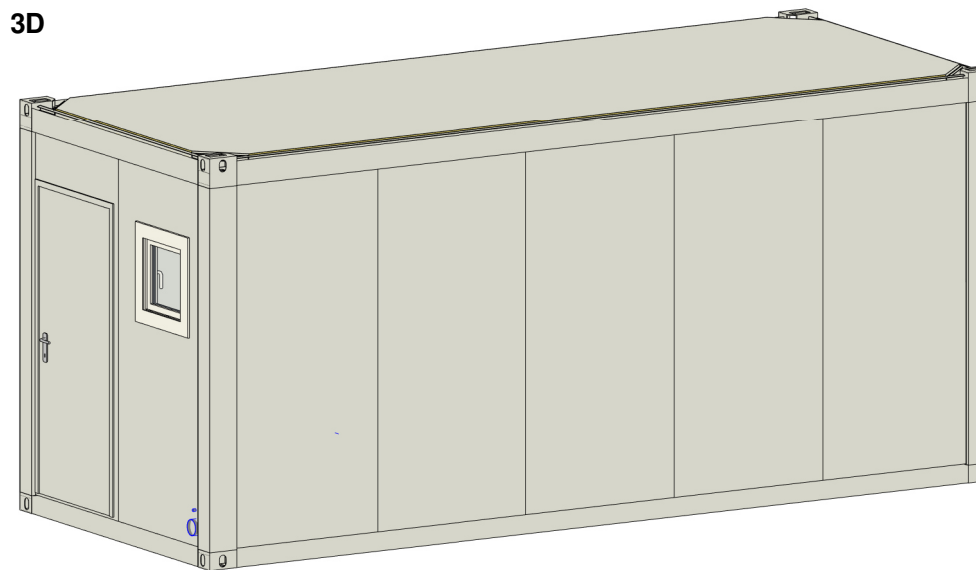


200
2445
120
2765

Floor Plan
1 : 50

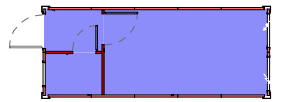


3D



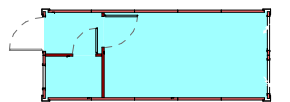
Floor plate

- Chipboard
- Woodcement plate



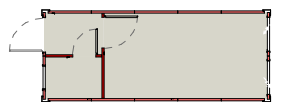
Floor covering

- PVC Gray



Ceiling covering

- Chipboard white



Inner wall color

- RAL 9002

TRIMO

TRIMO MSS, D.D.
PRIJATELJEVA CESTA 12
8210 TREBNJE | SLOVENIA
+386 (0)7 34 83 500
TRIMO.MSS@TRIMO.SI

Symbol	Light type	Pcs.
	Light sanitary 1x53W IP54	2
	Fluo light 2x36W	1
Symbol	Electrical equipment	Pcs.
	Switch single IP20	2
	Switch single IP44	1
	Socket single IP20	3
	Socket single IP44	2

Purchaser:	Drwg. Nr.: STD 002 - 01	Ins. [mm] 60	Pcs. 14	Labels Water inst. Electricity	Trimo PVC
Drwg. name: Plan with views	Version.: 01	Fe-60	2	Forklift	230/400V, 50Hz
Object: TYPE B	Scale: As indicated			Ceiling insulation	100mm
Ref. number: STD 002	Designed: Trimo MSS			Floor insulation	100mm
Date: 8/2017	Approved:			Frame galvaniz.	/
				Panel color	RAL 9002
				Frame color	RAL 9002
				Inner height	2,5m
				Accomplishment	Assmbltd/Trnspck

The contents of this drawing is PROPRIETARY and CONFIDENTIAL, wholly owned by Trimo MSS d.d., intended for authorized use only, and may be protected by material authors rights, copyrights, and/or other IP rights, including and not limited by trademarks, patents, industrial designs, whether registered, or not. Trimo MSS d.d. prohibits unauthorized use of this document. Violators may be subject to criminal and/or civil prosecution.

A3 : V / Š = 297 / 420 mm